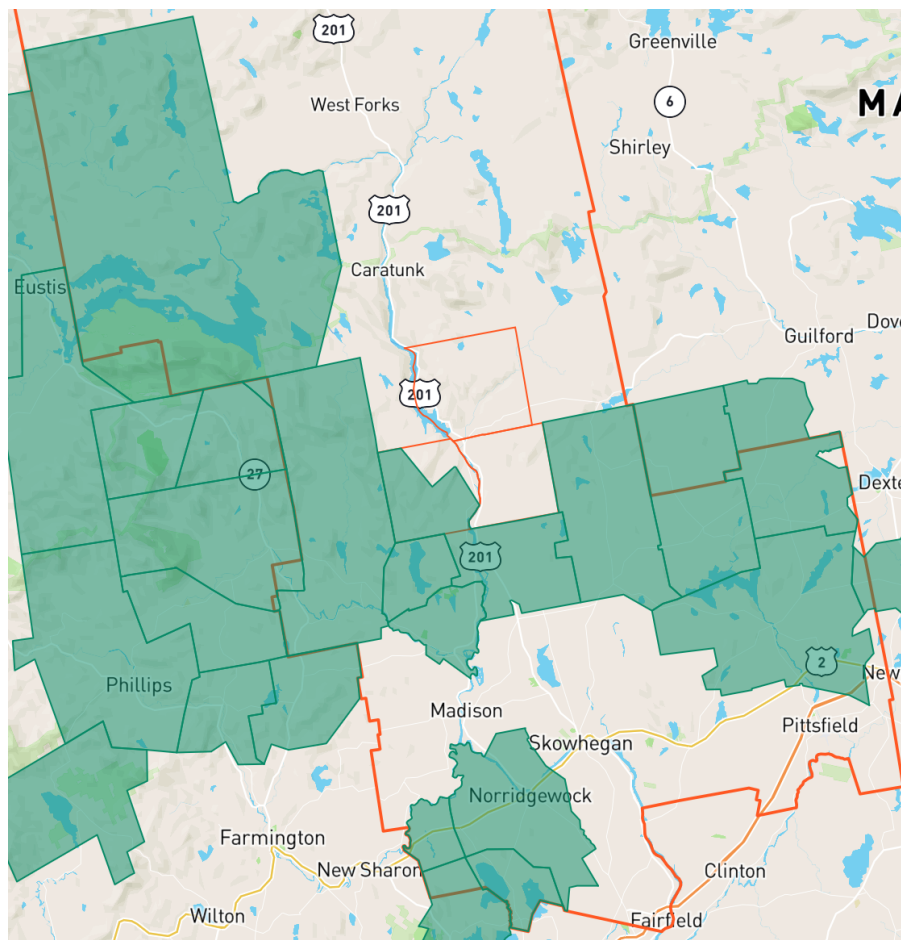


## Somerset County – Broadband Status Report

As of September 25, 2023, we believe all areas of Somerset County will be served via Fiber-to-the-Home (FTTH) services by the end of 2027. Below is a summary of service by FTTH service provider.

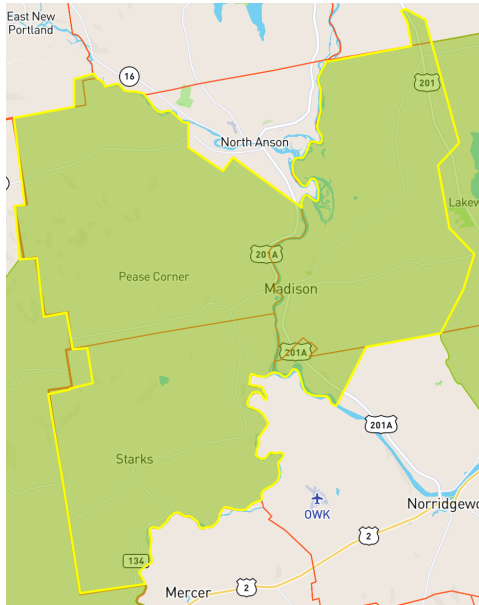
1. **TDS** previously announced they are deploying FTTH services in the following Somerset County communities - Mercer, Norridgewock, New Portland, North Anson, Harmony, West Ripley, Solon, Embden, Athens, and Warren. TDS has not been able to confirm if the fiber network will extend to all areas of each of these communities.

TDS is also considering accepting funding from the recently announced FCC Extended ACAM program that would require TDS to extend FTTH services to all TDS served locations in the state of Maine. Should they wish to accept this funding, they are required to make the commitment to the FCC by the end of September of this year and complete construction by the end of 2027. Should they accept this funding, all the areas in green in the image below within Somerset County will be served with fiber by TDS.

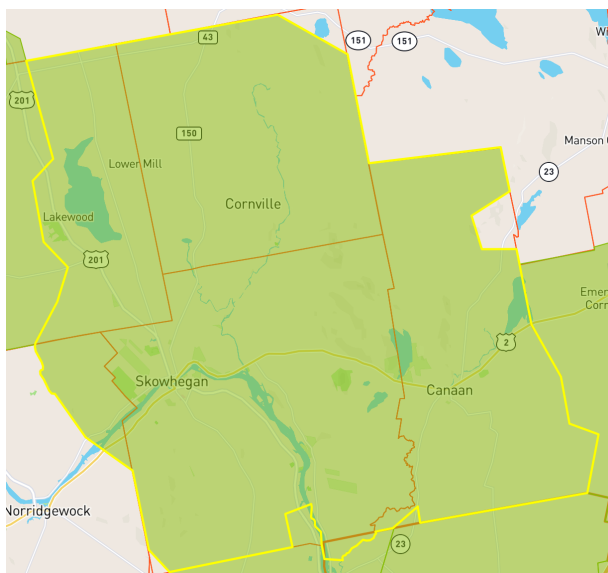


2. **Consolidated Communications (CCI)** is in the process of building FTTH services throughout the following areas:

- a. Madison exchange – west half of Madison, all of Anson, all of Starks and the area of Norridgewock not served by TDS.



- b. Skowhegan exchange – East half of Madison, Cornville, Canaan, Skowhegan, and an area of Norridgewock not served by TDS.





- c. CCI has plans to build FTTH in the following Towns, but the timing has not yet been determined – Palmyra, Detroit, Pittsfield, and Fairfield.
    - d. CCI recently submitted a grant application to the Maine Connectivity Authority (MCA) under the 2<sup>nd</sup> round of their Connect-the-Ready program for their Bingham exchange, which includes – Bingham, Moscow, Caratunk, Pleasant Ridge Plantation, and Concord Twp. Awardees will be announced in the 4<sup>th</sup> quarter of 2023.
  3. **Premium Choice Broadband (PCB)** – provides FTTH service throughout the following Towns – Moose River, Jackman, Long Pond, Sandwich Academy Grant, Taunton & Raynham Academy Grant, Rockwood, Tomhegan, Sapling Twp, and Misery Gore Twp.
  4. **Remaining unserved areas** include – The Forks, West Forks, Moxie Gore, Johnson Mountain, Parlin Pond, Dennistown Plt, Attean Twp, and Sandy Bay Twp along the Route 201 corridor to Canada. We expect these communities to receive service via CCI or PCB through the upcoming MCA Middle-Mile Grant program.
-